



ALPINE ENGINEERED PRODUCTS INC  
UL COORDINATOR  
PO BOX 2225  
POMPANO BEACH FL 33061

RE: Project Number(s) - 99NK5258

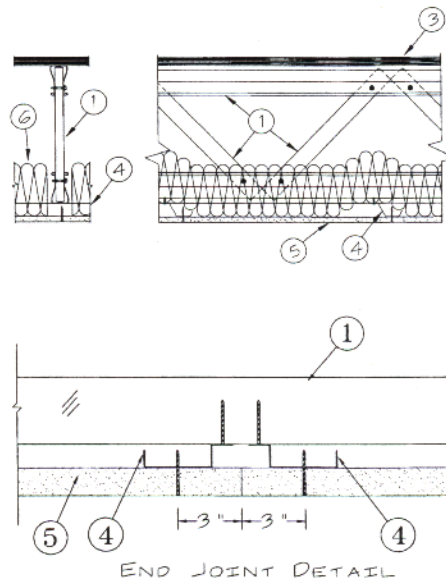
Your most recent listing is shown below. Please review this information and report any inaccuracies to the UL Engineering staff member who handled your project.

For information on placing an order for UL Listing Cards in a 3 x 5 inch format, please refer to the enclosed ordering information.

BXUV  
Fire Resistance Ratings - ANSI/UL263

July 2, 1999

**Design No. L551**  
Unrestrained Assembly Rating-1 Hr.



1. **Structural Steel Members\*** — Pre-fabricated light gauge steel truss system consisting of cold-formed, galv steel chord and web sections. Trusses fabricated in various sizes, depths and from various steel thickness. Trusses spaced a max of 48 in. OC.  
TRUSSTEEL, DIV OF  
ALPINE ENGINEERED PRODUCTS INC —TRUSSTEEL
2. **Bridging** — (Not Shown)—Location of lateral bracing for truss chord and web sections to be specified on truss engineering.
3. **Flooring System** — The finish flooring may consist of any one of the following systems:

System No. 1

**Finish Flooring**—Nom 1 by 4 in. T&G; laid perpendicular to trusses; or 15/32 in. thick plywood, min grade "Underlayment" or "Sturd-I-Floor" with T&G long edges, and conforming with PS 1-83 specifications; or nonveneer APA rated Sturd-I-Floor, T&G panels per APA specifications PRP-108. Long dimensions of panel (strength axis) or face grain of plywood to be perpendicular to trusses with joints staggered.

**Vapor Barrier**—(Optional)—Commercial asphalt saturated felt, 0.030 in. thick.

**Subflooring**—23/32 in. thick plywood with T&G edges along the 8 ft sides and exterior glue; or nonveneer APA rated Sturd-I-Floor T&G panels per APA specifications PRP 108. Installed perpendicular to trusses with end joints staggered 4 ft. Plywood or nonveneer APA rated panels, mechanically fastened to trusses 12 in. OC in conjunction with construction adhesive.

System No. 2

**Finish Flooring-Floor Topping Mixture\***—6.8 gal of water to 80 lbs of floor topping mixture to 1.9 cu ft of sant. Compressive strength to be 1100 psi min. Thickness to be 3/4 in. min.

HACKER INDUSTRIES INC —FIRM-FILL, FIRM-FILL 2010, FIRM-FILL HIGH STRENGTH, GYP-SPAN RADIANT.

**Floor Mat Material**—(Optional)—Nom 1/4 in. thick, adhered to subfloor with Hacker Floor Primer. Primer to be applied to the surface of the mat prior to the placement of a min 1-1/2 in. of floor topping mixture.

HACKER INDUSTRIES INC —SOUND-MAT.

**Subflooring**—23/32 in. thick plywood with T&G edges along the 8 ft sides and exterior glue; or nonveneer APA rated Sturd-I-Floor T&G panels per APA specifications PRP 108. Installed perpendicular to trusses with end joints staggered 4 ft. Plywood or nonveneer APA rated panels, mechanically fastened to trusses 12 in. OC in conjunction with construction adhesive.

4. **Resilient Channels** — Formed of 25 MSG galv steel, installed perpendicular to the steel trusses, (Item 1), spaced a max of 16 in. OC when no insulation (Item 6) is fitted in the concealed space, or a max of 12 in. OC when insulation (Item 6) is fitted in the concealed space, draped over the resilient channel/gypsum wallboard ceiling membrane. Two courses of resilient channel positioned 6 in. OC at wallboard butt-joints (3 in. from each end of wallboard). Channels oriented opposite at wallboard butt-joints. Channel splices overlapped 4 in. beneath steel trusses. Channels secured to each truss with Type S12 by 1/2 in. long screws.
5. **Wallboard Gypsum\*** — One layer of nom 5/8 in. thick by 48 in. wide boards, installed with long dimensional parallel to trusses. Attached to the resilient channels using 1 in. long Type S bugle-head screws. Screws spaced a max of 12 in. OC along butted end-joints and in the field with no insulation (Item 6) is fitted in the concealed space, or a max of 8 in. OC along butted end-joints and in the field when insulation (Item 6) is fitted in the concealed space, draped over the resilient channel/gypsum wallboard ceiling membrane.

CANADIAN GYPSUM COMPANY CANADA L5B 3J1—TYPE C OR IP-X2

UNITED STATES GYPSUM CO —TYPE C OR IP-X2

YESO PANAMERICANO S A DE C V MEXICO—TYPE C OR IP-X2

6. **Batts and Blankets\*** — Optional—Mineral wool or glass fiber insulation bearing the UL Classification Marking for Surface Burning Characteristics, having a flame spread value of 25 or less and a smoke value of 50 or less. Insulation fitted in the concealed space, draped over the resilient channel/gypsum wallboard ceiling membrane.
7. **Finishing System** — (Not Shown)—Vinyl, dry or premixed joint compound, applied in two coats to joints and screw-heads; paper tape, 2 in. wide, embedded in first layer of compound over all joints. As an alternate, nom 3/32 in. thick veneer plaster may be applied to the entire surface of gypsum wallboard.

\*Bearing the UL Classification Marking